

Hattulan kunta

Katinalan Rinteen asemakaava

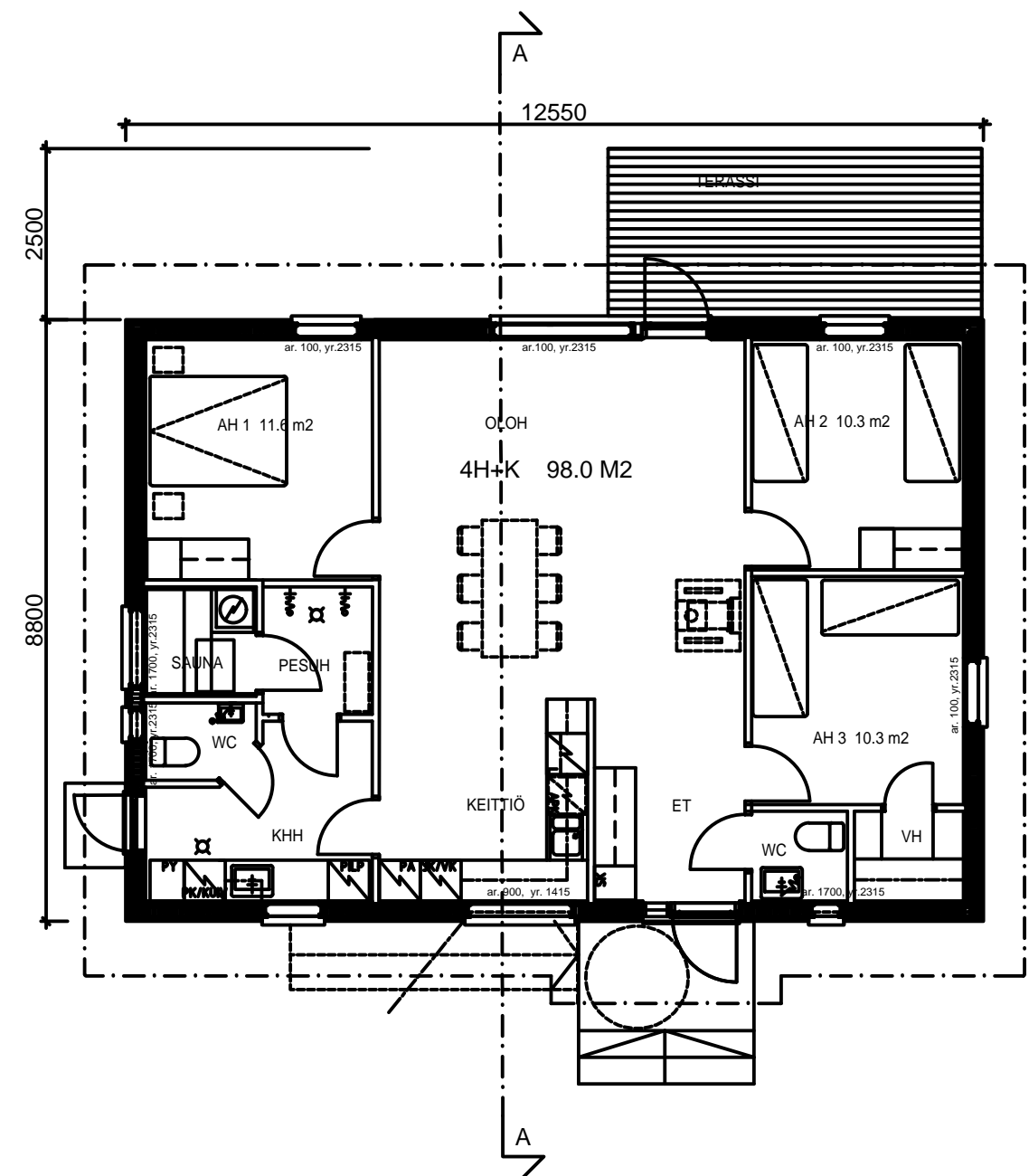
Mitoitustarkastelu / Ao tontit

Ao I 1/2 noin 30 ja Ao I noin 30

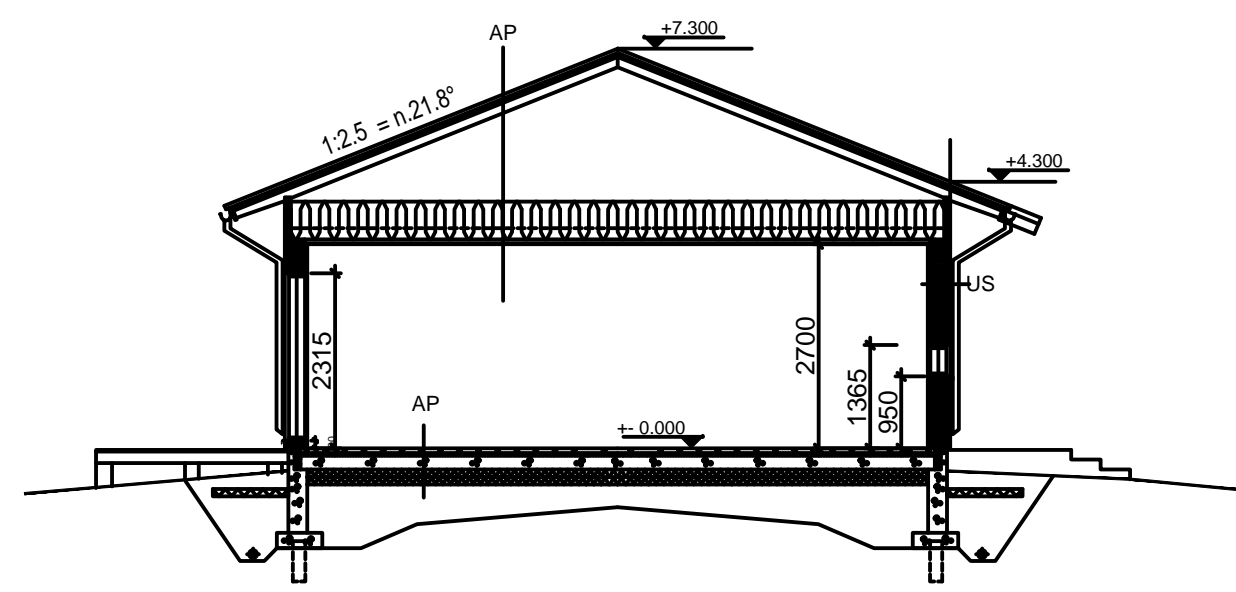
Maankäyttö mniemi / Markku Niemi

28.06.2024

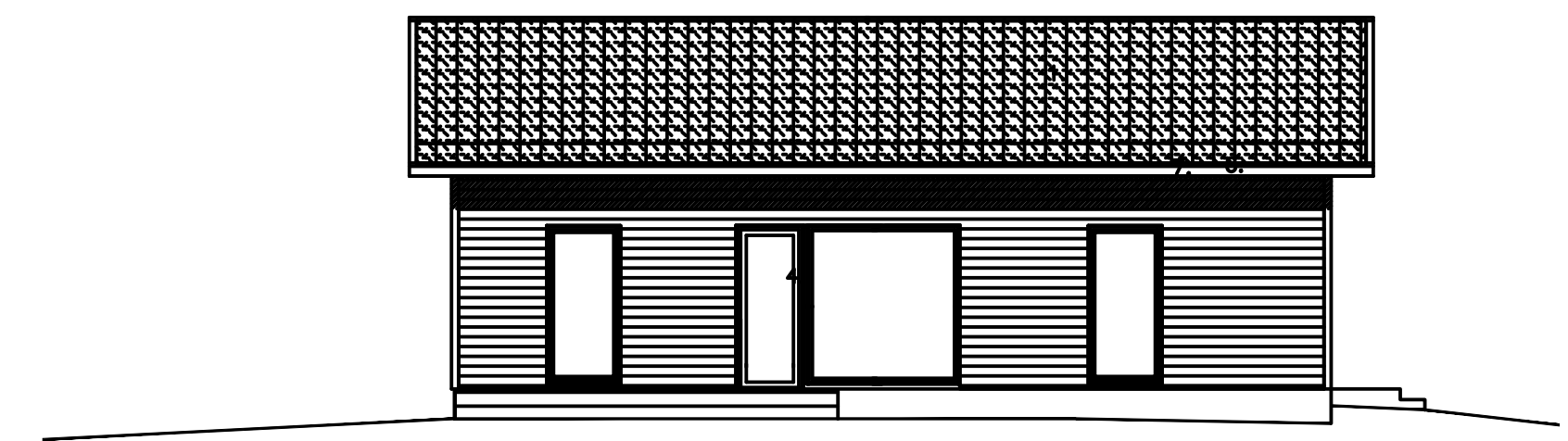
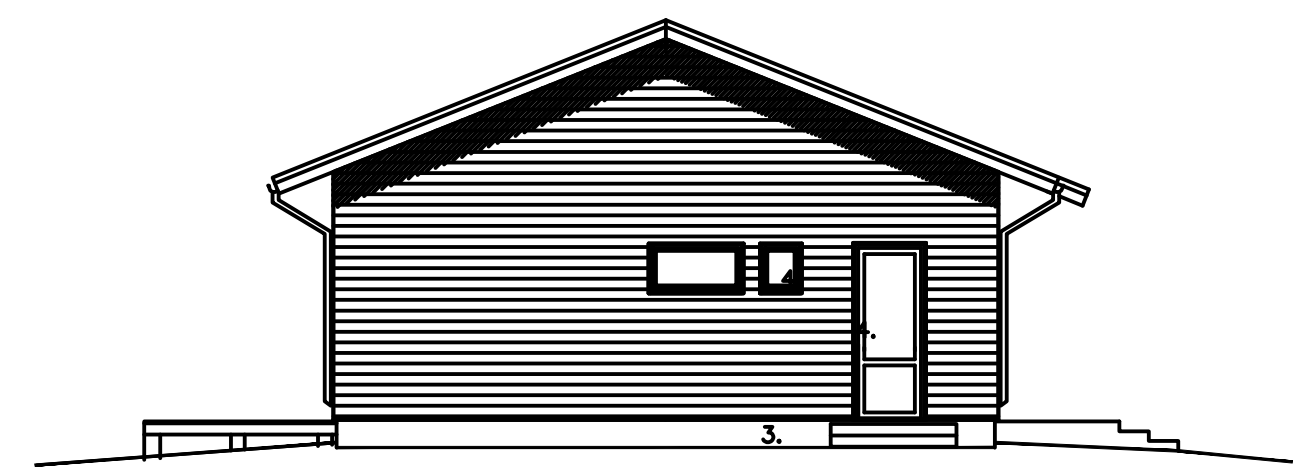
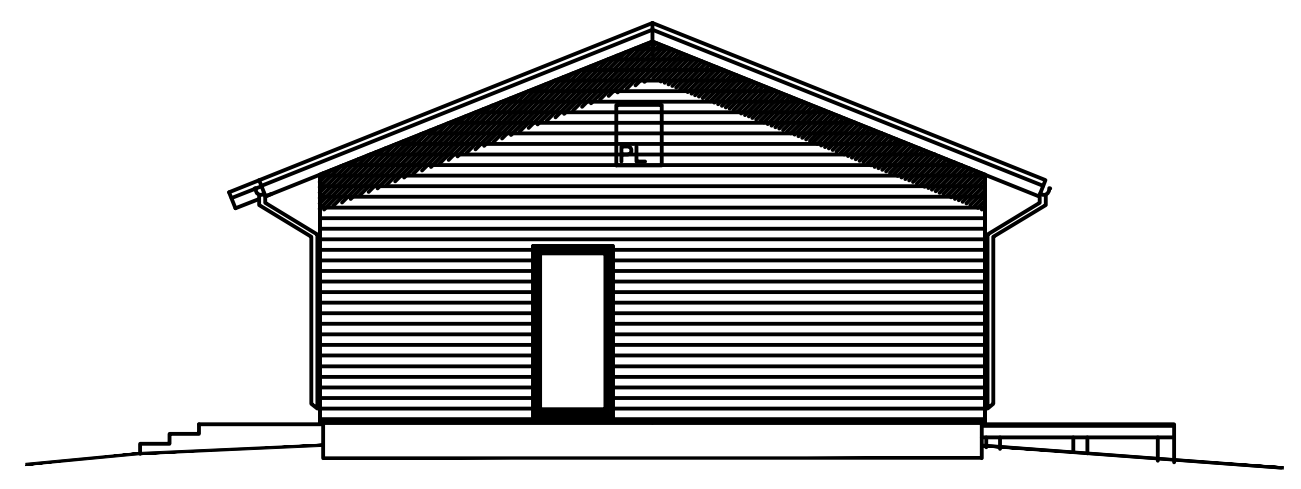
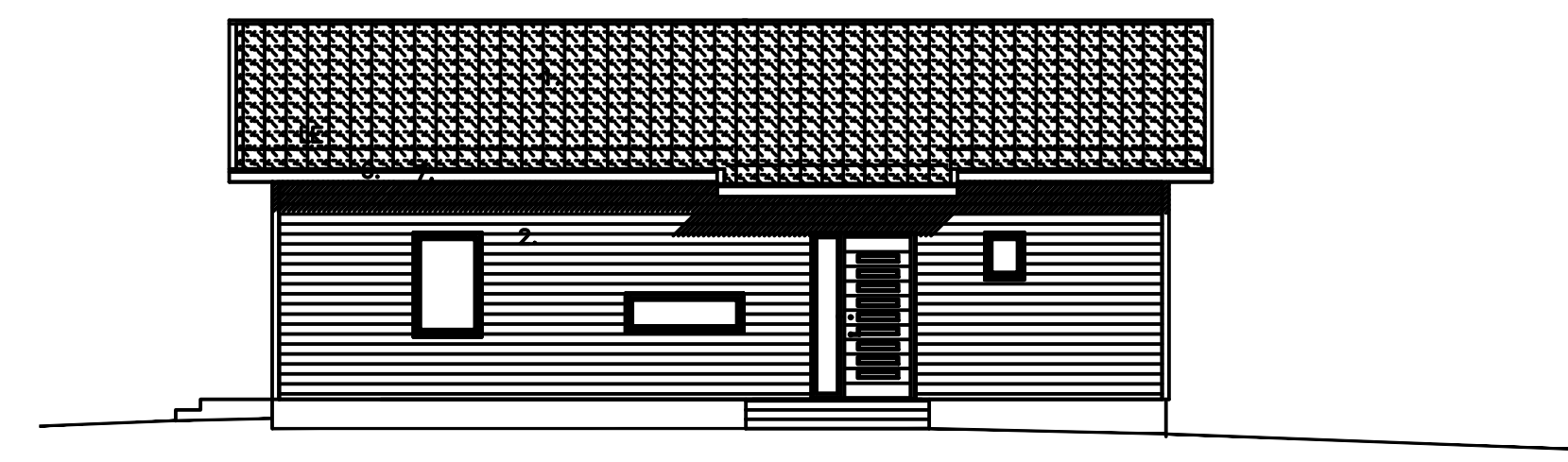
Kosa/Kylä	Kortteli/Tila	Tontti/Rno	Viranomaisen arkistointimerkintöjä varten	
-	-	-	Piirustusta.ji	Juoks.no
Rakennustoimenpide			LUONNOS	1/1
Rakennuskohteen nimi ja osoite			Piirustuksen sisältö	Mittakaavat
TONTIT - HATTULAN KATINPUISTO			KAAVAPOHJA	1:2000
Suunnittelijan nimi,pöivöys ja allekirjoitus			Suunnitteluala,työn numero ja piirustuksen numeroMuutos	
RAKENNUSSUUNNITTELU TIMO SUVANTO OY timou.suvanto@gmail.com MARKKU NIEMI DI VIERUNTIE 16 21420 LIETO 040-5020 925 28.06.2024 rak.arkk.			ARK 2064-402	

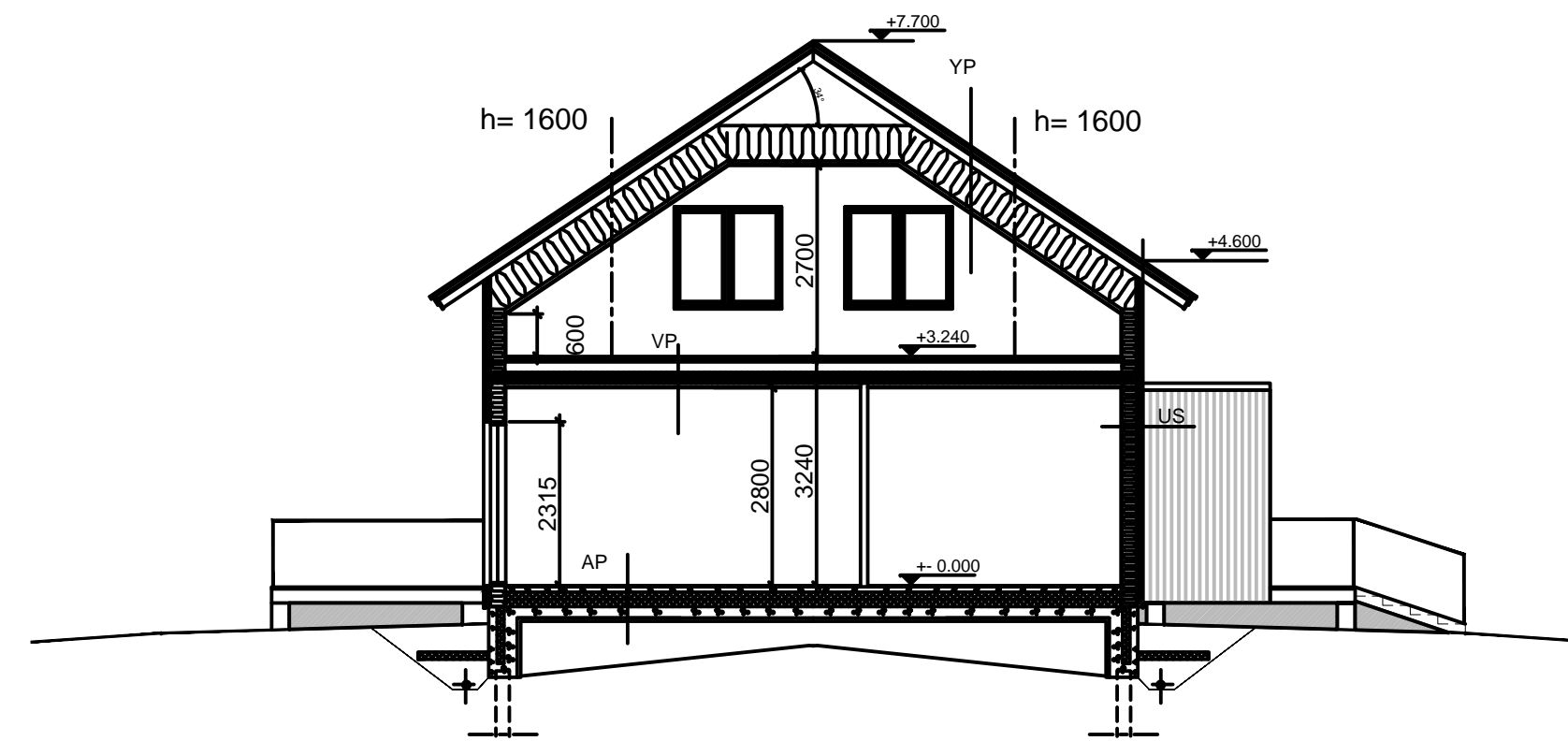
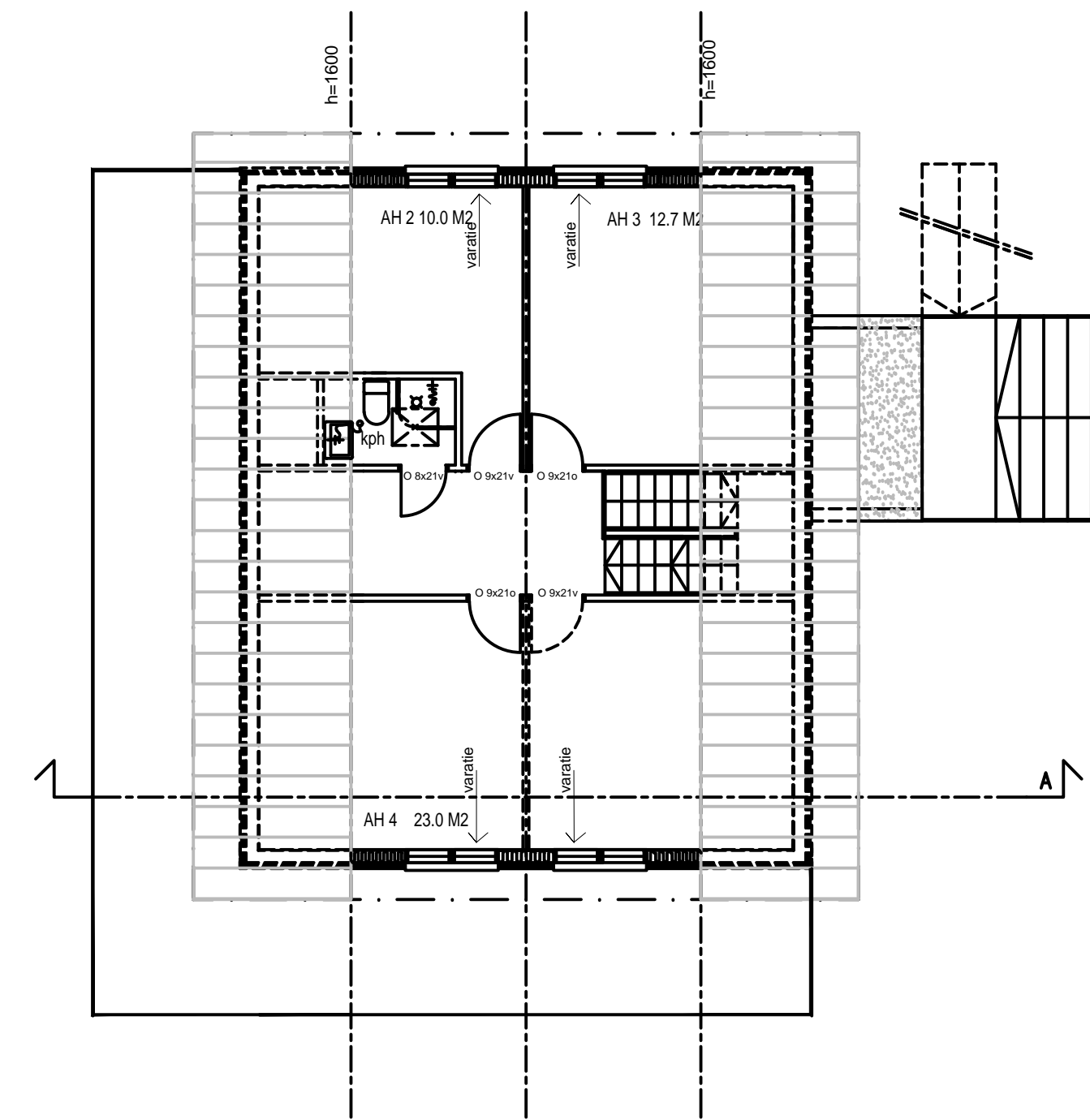
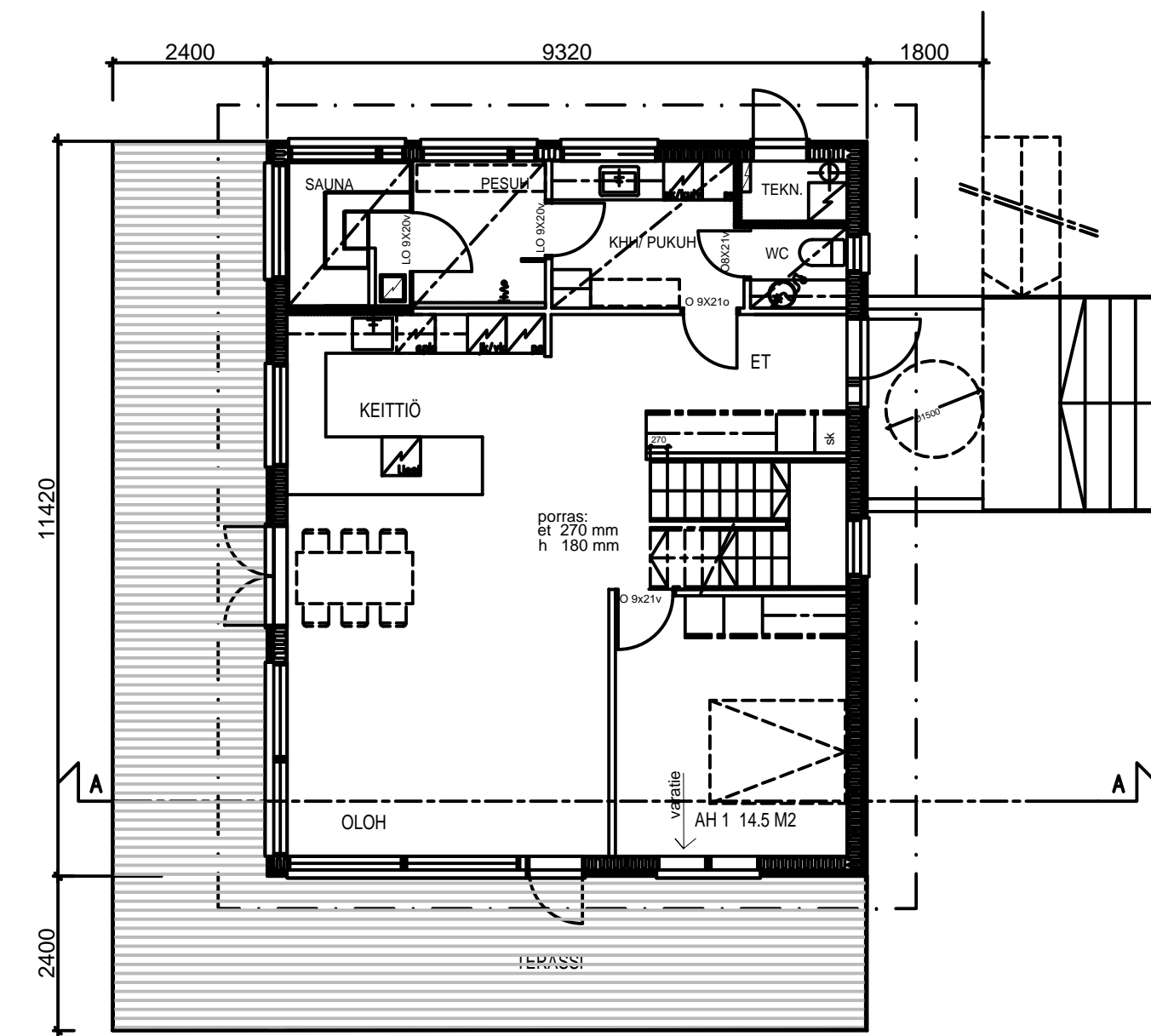


KOKONAISALA 110.0 M²
 KERROSALA 110.0 M²
 KERROSALA (250) 108.0 M²
 HUONEISTOALA 4H+K = 98.0 M²
 TILAVUUS 410.0 M³

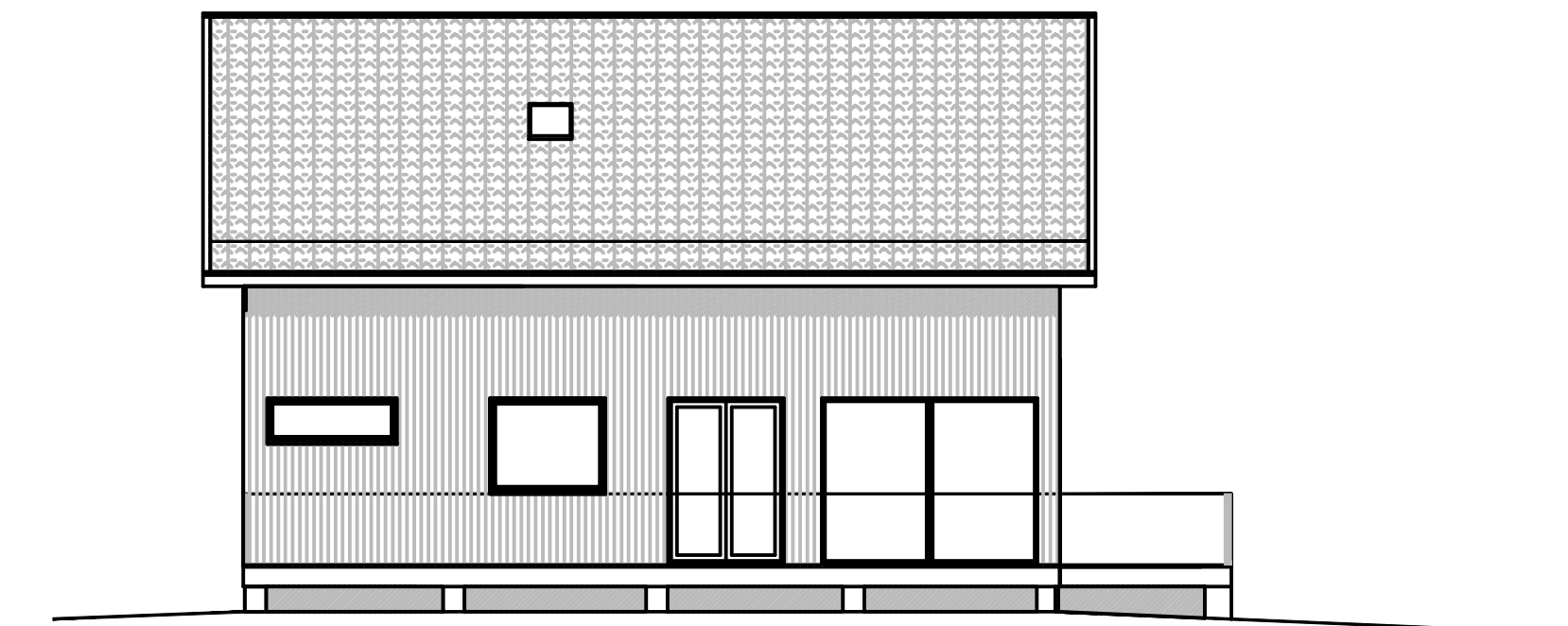
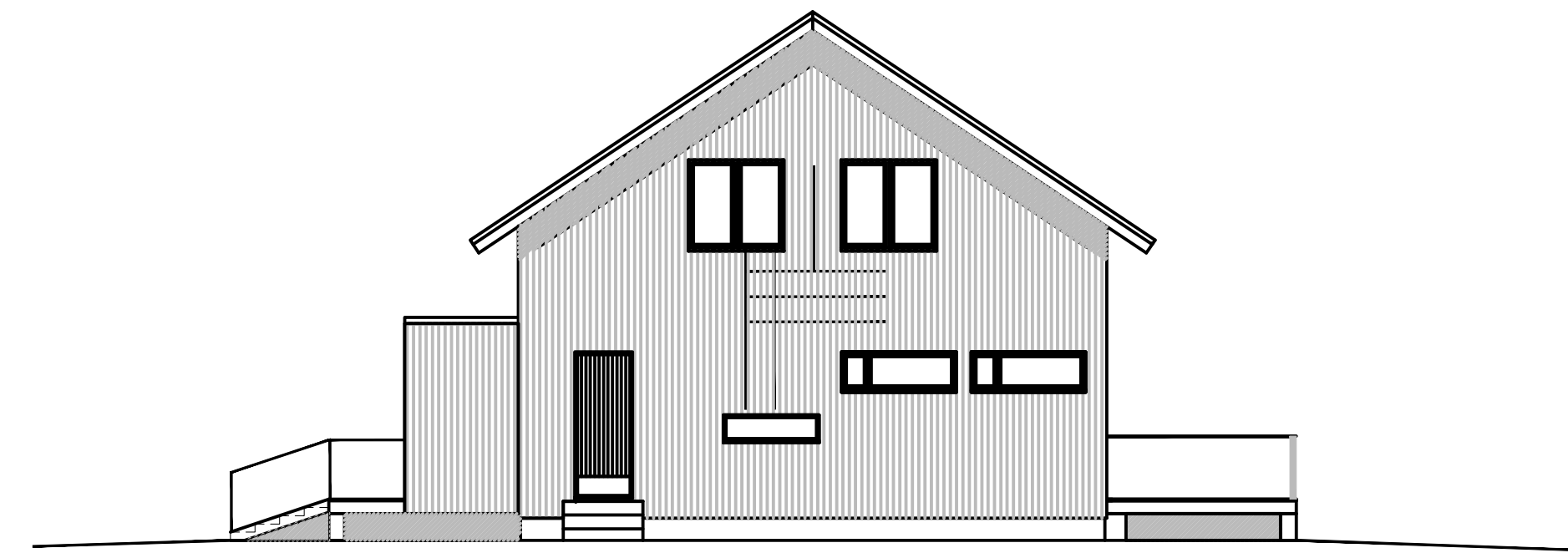
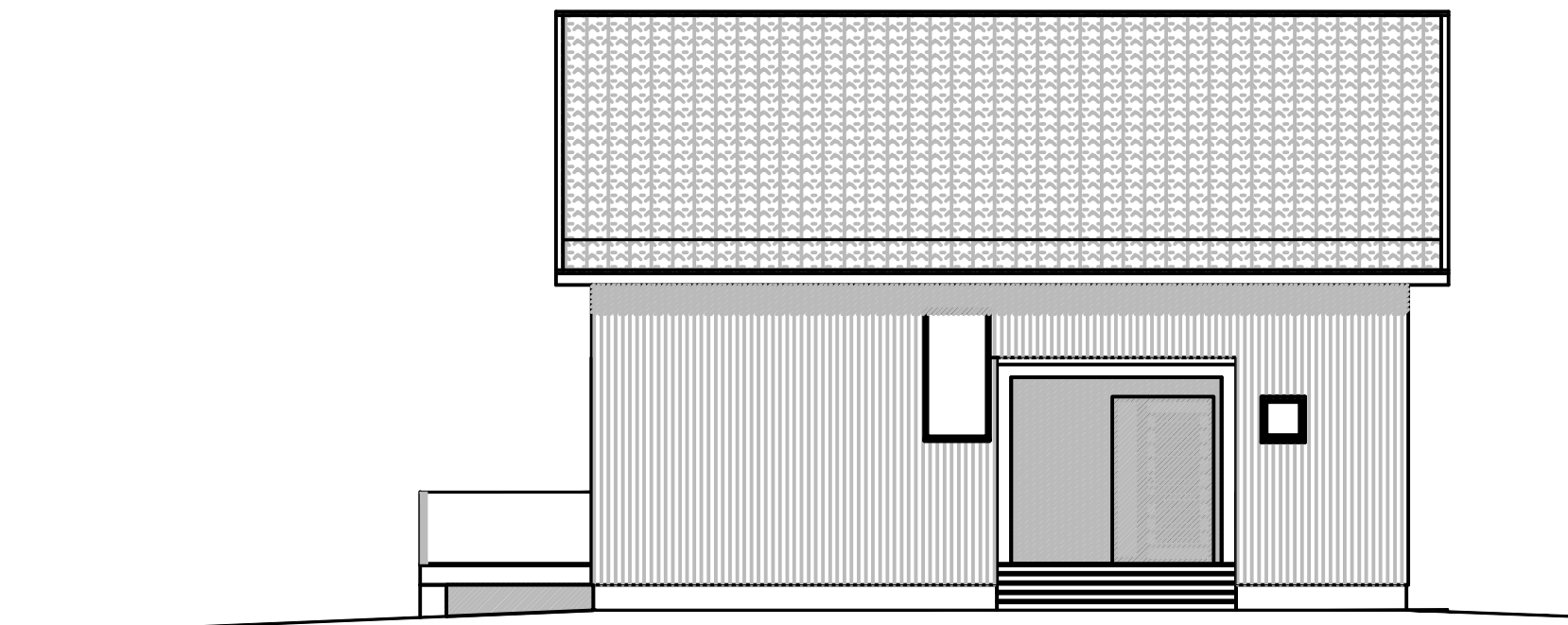


Leikkaus A-A

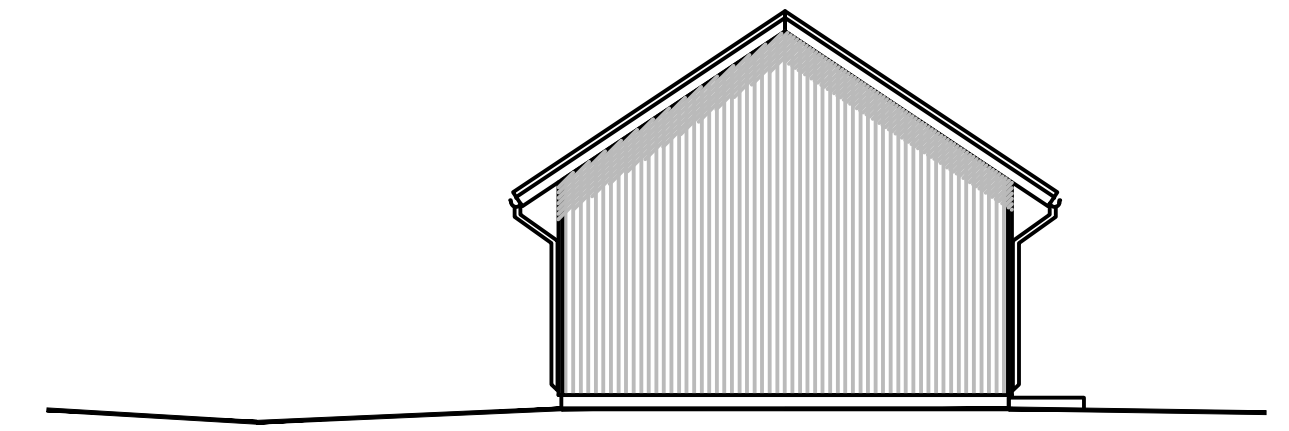
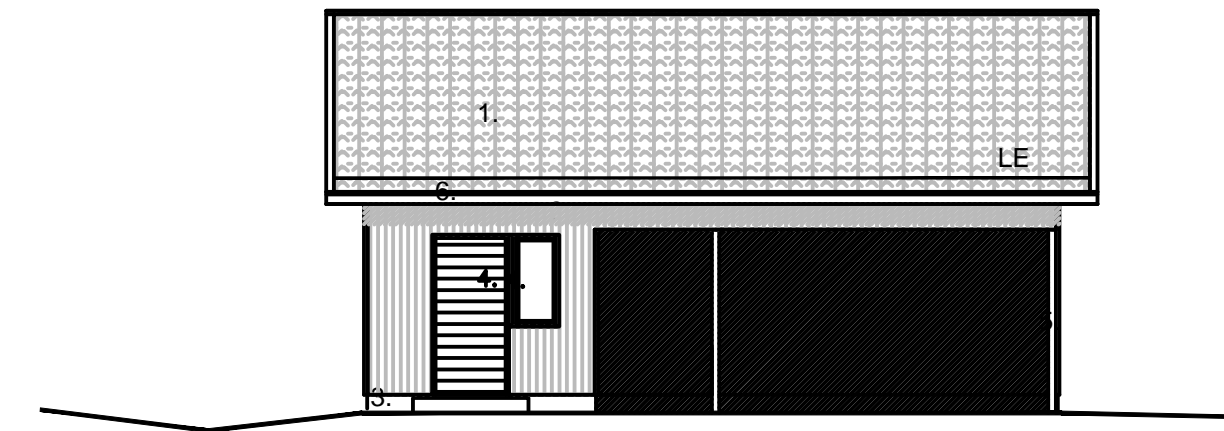
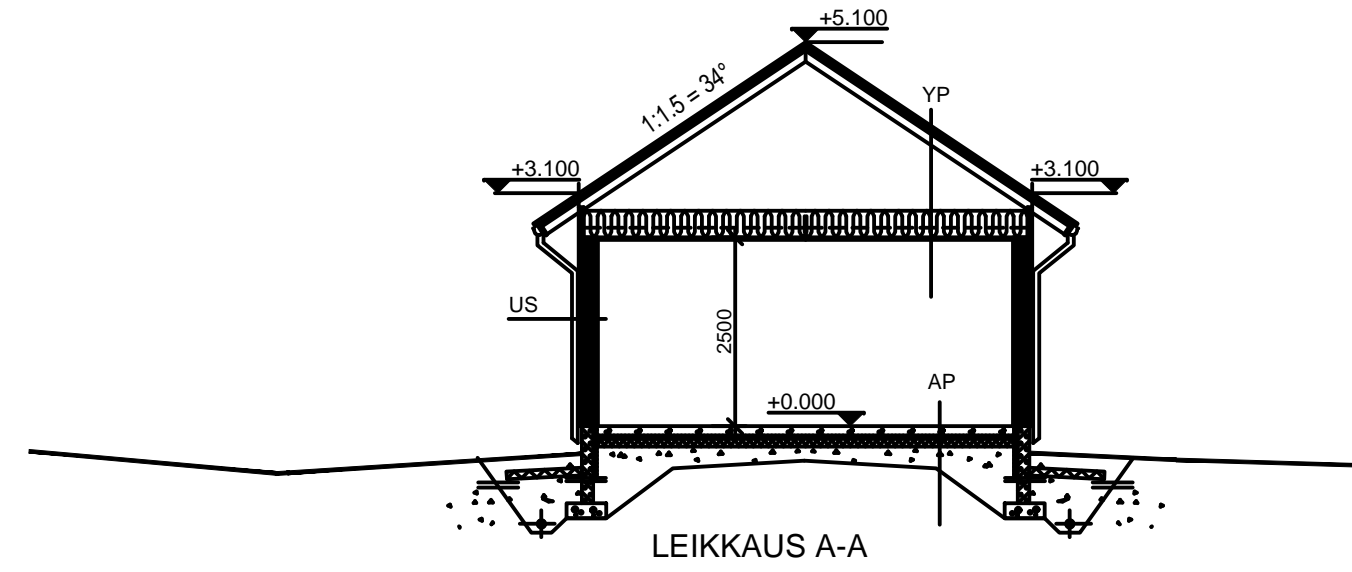
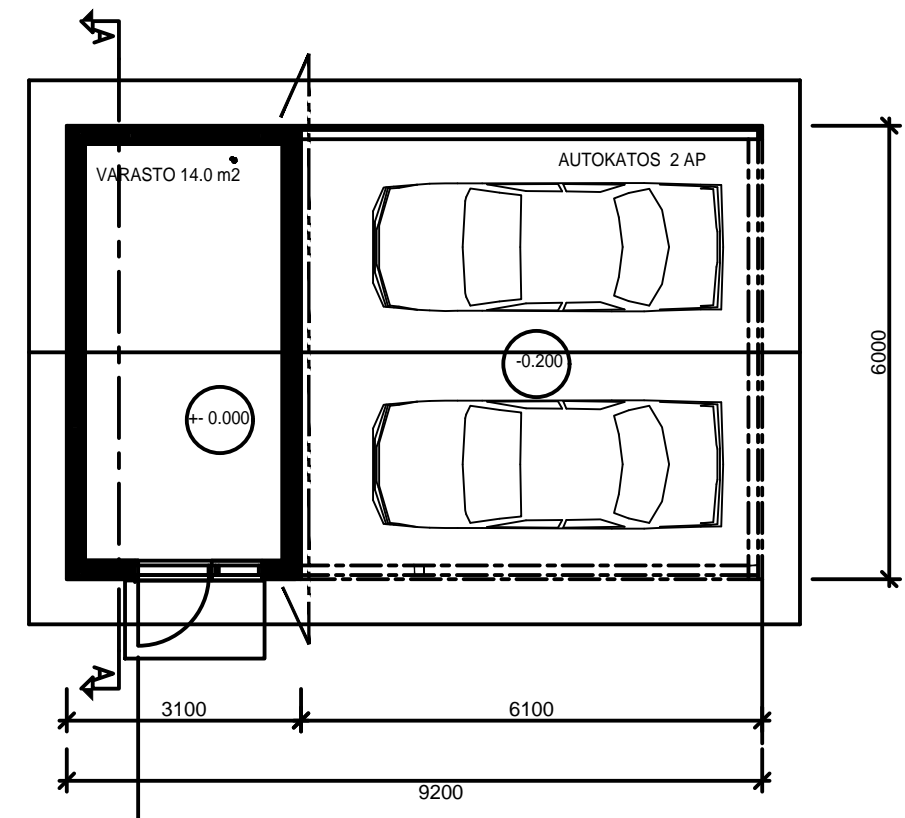




LEIKKAUS A - A



KOKONAISALA; 1.KERROS 106.0 M2+ ULL. 65.0 M2 = 171.0 M2
 KERROSALA; 1.KERROS 106.0 M2+ ULL. 60.0 M2 = 166.0 M2
 KERROSALA (250); 1.KERROS 104.0 M2+ ULL.58.0 M2= 162.0 M2
 HUONEISTOALA 5H+K; 1.KERROS 94.0 M2+ ULL. 55.0 = 149.0 M2



KERROSALA 18.5 M²
 KOKONAISALA 18.5 M²
 TILAVUUS 58.0 M³

